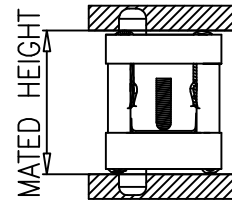
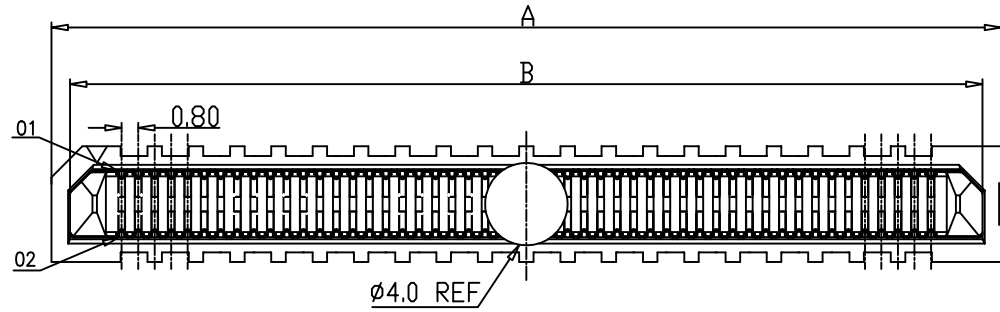


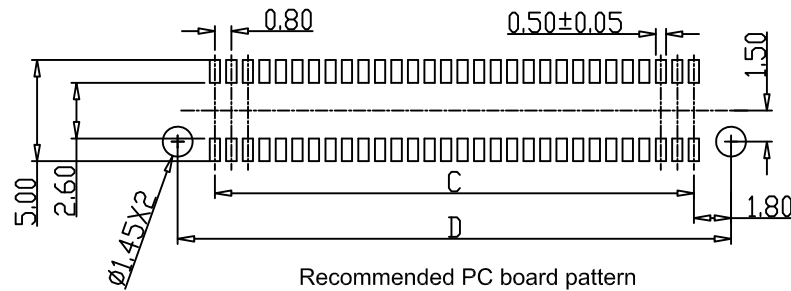
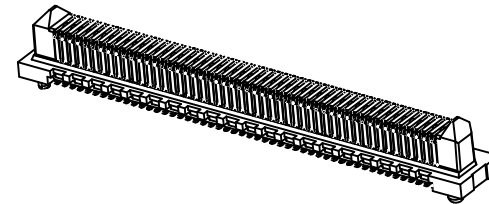
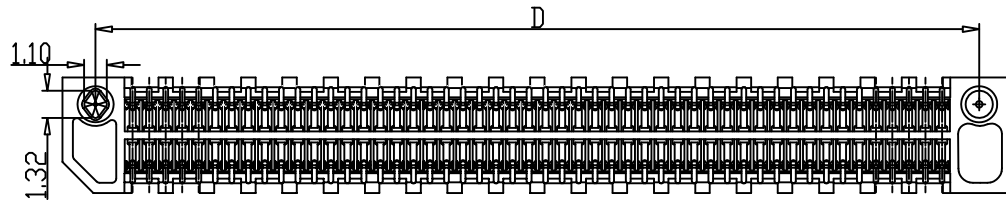
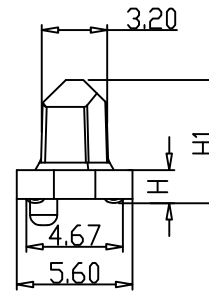
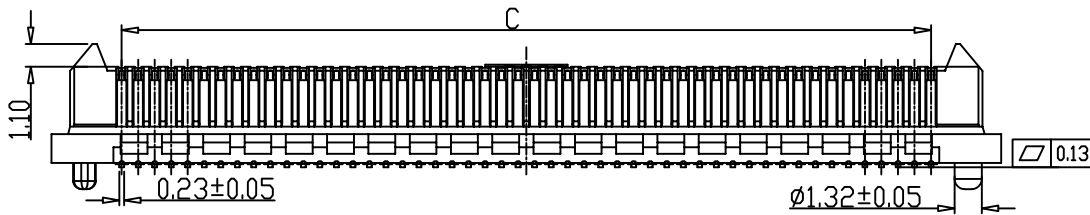
REV	ECN NO	DESCRIPTION	DATE	NAME
A	—	NEW	11/11-'20	ZW



Ordering Information

LBT 080 - XX XX S X X XX X

Pitch 080=0.8	NO. of Pins Per Row: 01-99P	Insulation Height 20=2.0MM 50=5.0MM 80=8.0MM 90=9.0MM	product type D:DIP-180 R:DIP-90 S:SMT立贴 L:SMT贴片 W:DIP弯贴 Q:DIP弯挂 C:Crimping打线	Insulator Material 1:PBT 2:LCP 3:NY46 4:NY66 5:NY6T 6:NY9T	Contact Plating G:G/F 1: Au1u" 2: Au3u" 3: Au5u" 4: Au10u" 5: Au15u" 6: Au30u" 7: Gold/Tin 8: Tin 9: Customized	Serial NO. 01-99	Packing A=PE Bag B=Tube C=Tray D=Reel
------------------	-----------------------------------	----------------------------------------------------------------------	---------------------------------------------------------------------------------------------------	---------------------------------------------------------------------------------	--------------------------------------------------------------------------------------------------------------------------------------------------	---------------------	---------------------------------------------------



Recommended PC board pattern
(TOP VIEW)

POSITION	A	B	C	D
10	10.00	8.20	3.20	6.80
20	14.00	12.20	7.20	10.80
22	14.80	13.00	8.00	11.60
24	15.60	13.80	8.80	12.40
26	16.40	14.60	9.60	13.20
30	18.00	16.20	11.20	14.80
40	22.00	20.20	15.20	18.80
50	26.00	24.20	19.20	22.80
60	30.00	28.20	23.20	26.80
70	34.00	32.20	27.20	30.80
80	38.00	36.20	31.20	34.80
100	46.00	44.20	39.20	42.80
120	54.00	52.20	47.20	50.80
140	62.00	60.20	55.20	58.80
150	66.00	64.20	59.20	62.80
200	86.00	84.20	79.20	82.00

MATED HEIGHT						
ERM8 LEAD STYLE	ERF8 LEAD STYLE			HEIGHT	H	H1
	5.0	7.0	9.0			
2.0	7.00	9.00	11.00	2.00	1.61	5.97
5.0	10.00	12.00	14.00	5.00	4.61	8.91
8.0	13.00	15.00	17.00	8.00	7.61	11.91
9.0	14.00	16.00	18.00	9.00	8.61	12.91

SPECIFICATIONS
 1.CURRENT RATING:1.0A.
 2.VOLTAGE RATING 300VA.
 3.OPERATING TEMPERATURE RANGE:-55°C TO+125°C
 4.OPERATING HUMIDITY RANGE:90% TO 95%.
 5.WITHSTANDING VOLTAGE:500 VAC

STANDARD TOLERANCE (EXCEPT SPECIFIED)	
LINER	ANGLES
.0 ±0.30	0.° ±3°
.00 ±0.20	.0° ±2°
.000 ±0.10	.00° ±1°

LDCONN 东莞连大精密制品有限公司
 連大 DongGuan LianDa Precision Products Co., LTD

TITLE	ERM8 PH0.8 BTB 插头	DRAWN BY	ZW	11/11-'20
PART NO	LBT080-XXXXS2GXDXD	CHECKED BY		
DRAWING NO	—	APPROVED BY		
SCALE	1:1	UNIT	mm	
PAGE	1/1	SIZE	A4	