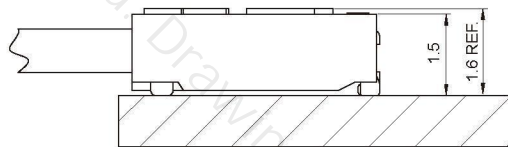


■ **Specifications**

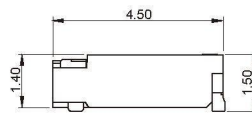
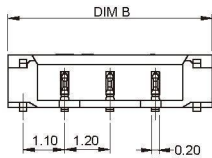
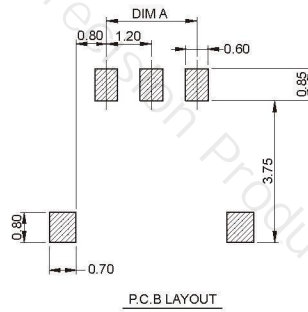
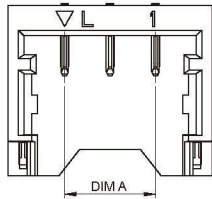
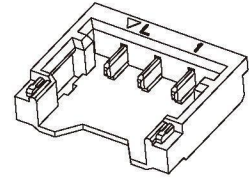
- Contact resistance:  $\leq 20\text{m}\Omega$
- Insulation resistance:  $\geq 100\text{M}\Omega$
- Rated voltage: 50V AC DC
- Rated current: 2.0A AC DC
- Withstand voltage: 500V AC/minute
- Temperature range:  $-25^{\circ}\text{C} \sim +85^{\circ}\text{C}$

■ **Assembly Layout**



**A1201AWR** (1.20mm pitch 90°Wafer SMT TYPE)

- Reference Information:
- Material: Pin: Phosphor Bronze/Tin-plated or Gold-flash
- SolderTabs: Brass/Tin-plated
- Wafer: PA9T,UL94V-0
- Mates with A1201 series Housing

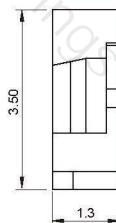
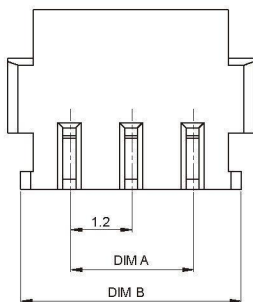
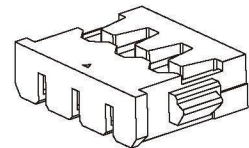


**Ordering Information & Dimensions:**

Circuit	Dimensions(mm)	
	A	B
02	1.20	4.20
03	2.40	5.40
04	3.60	6.60
05	4.80	7.80
06	6.00	9.00
07	7.20	10.20
08	8.40	11.40
09	9.60	12.60
10	10.80	13.80

**A1201Y** (1.20mm pitch Housing)

- Reference Information:
- Material: PA66,UL94V-0(2)
- Mates with A1201 series Wafer

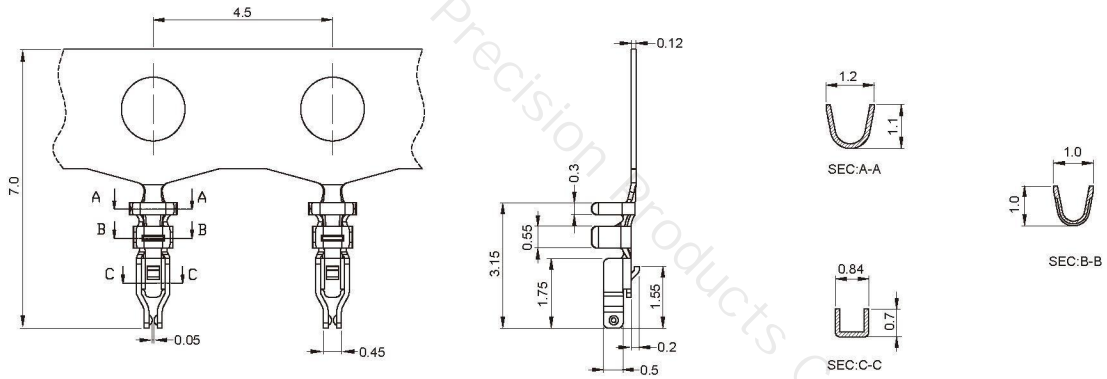


**Ordering Information & Dimensions:**

Circuit	Dimensions(mm)	
	A	B
02	1.20	3.10
03	2.40	4.30
04	3.60	5.50
05	4.80	6.70
06	6.00	7.90
07	7.20	9.10
08	8.40	10.30
09	9.60	11.50
10	10.80	12.70

**A1201T** (1.20mm pitch Terminal)

- Reference Information:  
Used in A1201 series Housing



**Ordering Information & Dimensions:**

Part No	Wire Range	Insulation O.D.	Material	Finish	Qty/Reel
A1201T	AWG #28 ~ #30	0.70mm(max)	Phosphor bronze	Gold-flash	15000PCS